
Great Yarmouth Third River Crossing Application for Development Consent Order

Document 2.9: Landscaping Plans

Planning Act 2008

The Infrastructure Planning (Applications: Prescribed Forms and Procedure) Regulations 2009 (as amended) (“APFP”)

APFP Regulation Number: 5(2)(o)

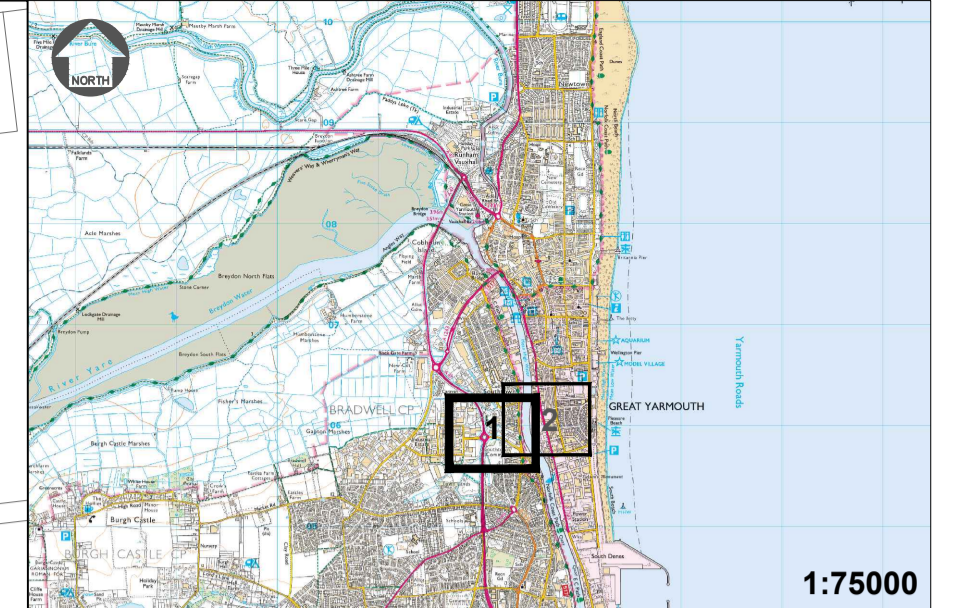
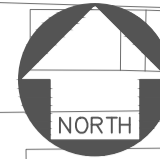
Planning Inspectorate Reference Number: TR010043

Author: Norfolk County Council

Document Reference: 2.9

Version Number: 0 – Revision for Submission

Date: 30th April 2019



- Key:**
- Order Limits
 - Mitigation Works for Great Yarmouth and Waveney Mind
 - New Location for Allotments
- Soft Landscaping Key**
- Existing Trees
 - Location for Trees
 - Shrub and Hedge Planting
 - Species Rich Grass
 - Grass
 - Swale Planting and Seeding
 - Reinforced Earth Embankment with Planted Slope
- Hard Landscaping Key**
- Existing Non - Motorised User (NMU) Facility
 - Proposed Cycle Facility
 - Maintenance Access
 - Hard Surfacing for Public Realm
 - Permeable Deterrent Paving
 - Steps, Ramps and Terraces in Public Realm
 - Fencing
 - Signalised Crossing
 - Non - Signalised Crossing

Notes:
 1. Ordnance Survey mapping is shown as a background to this drawing. The landscape design was prepared using a topographical survey as a basis.

Mapping reproduced by permission of Ordnance Survey on behalf of HMSO.
 © Crown copyright and database rights 2018 Ordnance Survey 100019340.

REVISION	DRAWN	CHECKED	APPROVED	DATE

Norfolk County Council
 Tom McCabe
 Executive Director of
 Community and Environmental Services
 Norfolk County Council
 County Hall, Martineau Lane
 Norwich NR1 2SG

PROJECT TITLE
**GREAT YARMOUTH
 THIRD RIVER CROSSING**

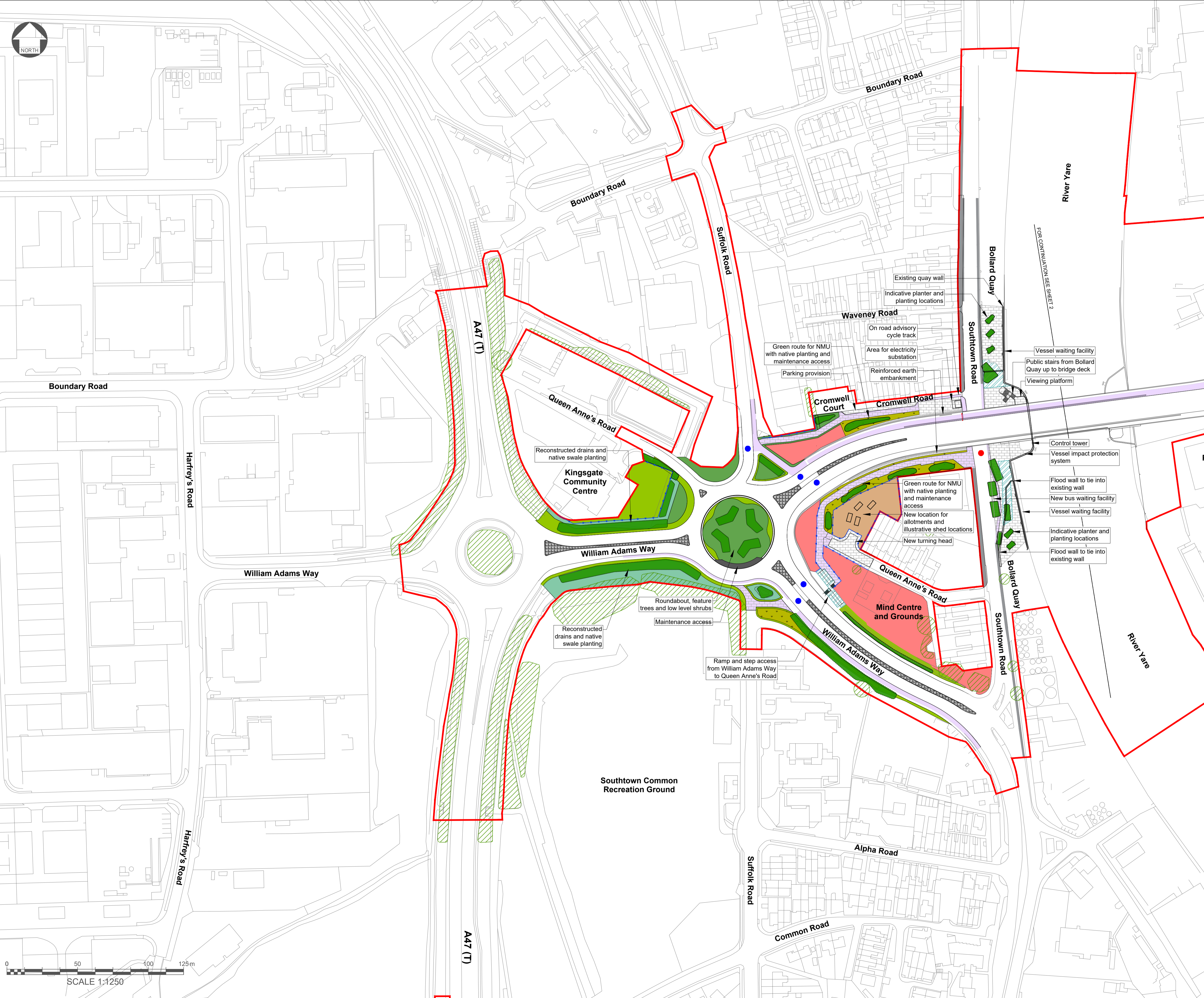
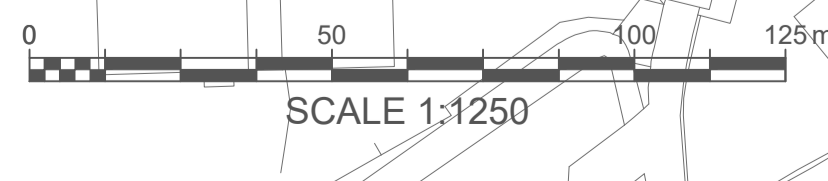
DRAWING TITLE
 DCO DOCUMENT 2.9
 LANDSCAPING PLANS
 SHEET 1 OF 2
 (REGULATION 5(2)(o))

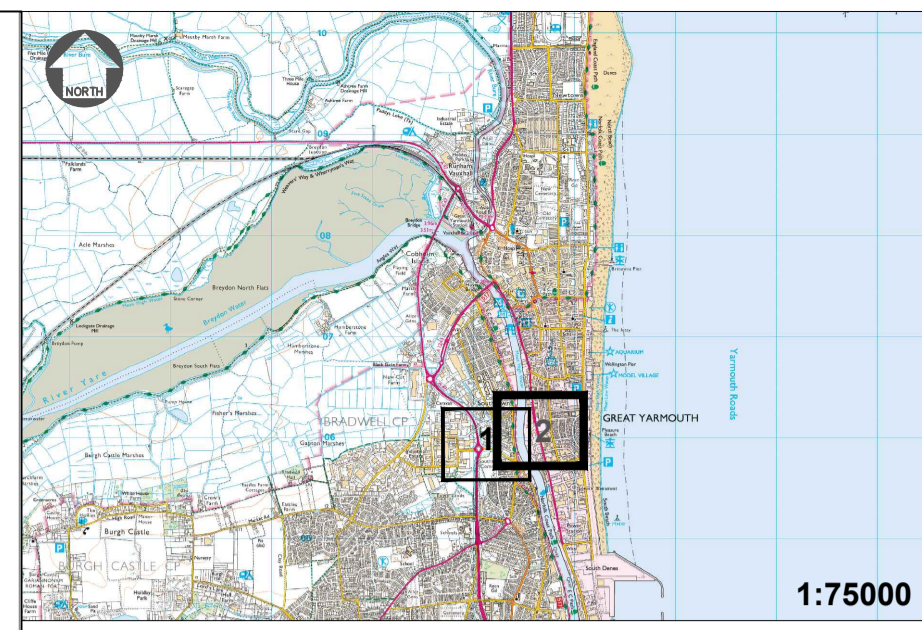
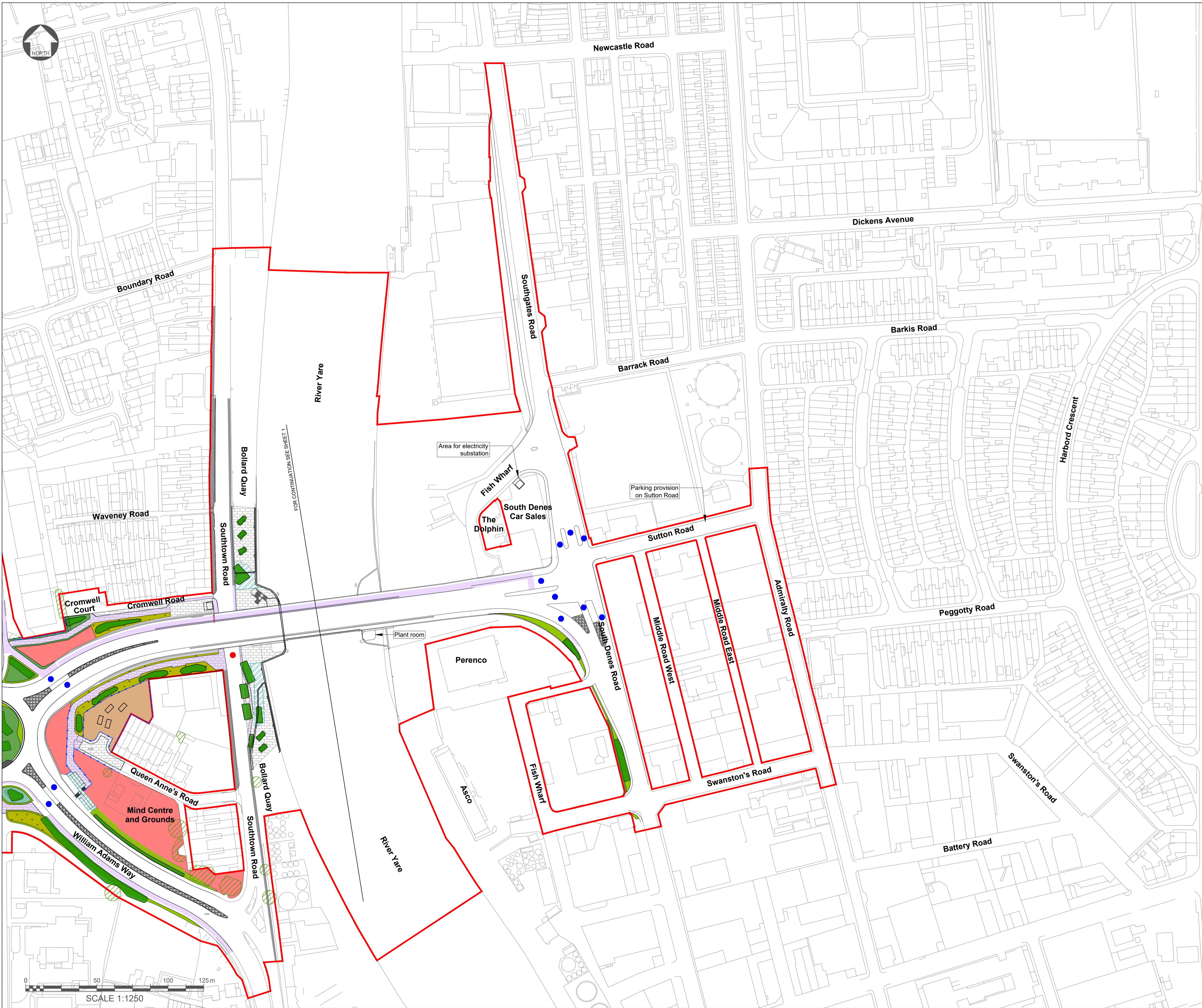
DRAWING STATUS
 FOR DCO APPLICATION

DRAWN	CHECKED	APPROVED	AUTHORISED
YH	CN	AG	MK

SCALE @ A1 SIZE	DATE	REVISION
1:1,250	12/04/2019	P00

DRAWING NUMBER
 GYTRC-WSP-ELS-XX-DR-LD-1037





- Key:**
- Order Limits
 - Mitigation Works for Great Yarmouth and Waveney Mind
 - New Location for Allotments
- Soft Landscaping Key**
- Existing Trees
 - Location for Trees
 - Shrub and Hedge Planting
 - Species Rich Grass
 - Grass
 - Swale Planting and Seeding
 - Reinforced Earth Embankment with Planted Slope
- Hard Landscaping Key**
- Existing Non - Motorised User (NMU) Facility
 - Proposed Cycle Facility
 - Maintenance Access
 - Hard Surfacing for Public Realm
 - Permeable Deterrent Paving
 - Steps, Ramps and Terraces in Public Realm
 - Fencing
 - Signalled Crossing
 - Non - Signalled Crossing

Notes:
 1. Ordnance Survey mapping is shown as a background to this drawing. The landscape design was prepared using a topographical survey as a basis.

Mapping reproduced by permission of Ordnance Survey on behalf of HMSO.
 © Crown copyright and database rights 2018 Ordnance Survey 100019340.

REVISION	DRAWN	CHECKED	APPROVED	DATE

Norfolk County Council
 Tom McCabe
 Executive Director of
 Community and Environmental Services
 Norfolk County Council
 County Hall, Martineau Lane
 Norwich NR1 2SG

PROJECT TITLE
**GREAT YARMOUTH
 THIRD RIVER CROSSING**

DRAWING TITLE
 DCO DOCUMENT 2.9
 LANDSCAPING PLANS
 SHEET 2 OF 2
 (REGULATION 5(2)(o))

DRAWING STATUS
 FOR DCO APPLICATION

DRAWN	CHECKED	APPROVED	AUTHORISED
YH	CN	AG	MK

SCALE @ A1 SIZE	DATE	REVISION
1:1,250	12/04/2019	P00

DRAWING NUMBER
 GYTRC-WSP-ELS-XX-DR-LD-1038